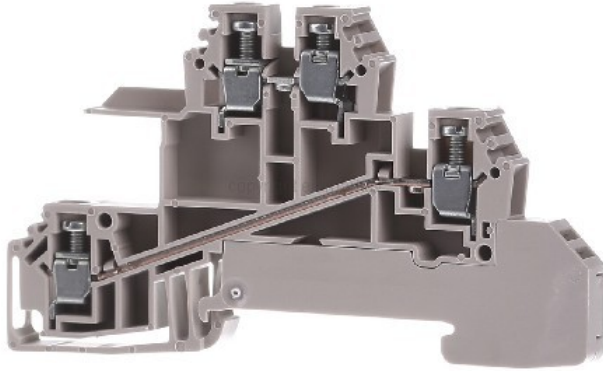


Distribution terminal 84.5x6.1x49mm - Feed-through terminal block 6,1mm 24A WDL 2.5/S/L/L



Weidmüller
WDL 2.5/S/L/L
1031200000
4008190189259 EAN/GTIN

1,55 GBP excl. VAT**
plus shipping



3-5 days* (GBR)

Distribution terminal 84.5x6.1x49mm WDL 2.5/S/L/L Connectable conductor cross-section, finely stranded without ferrule 0.5 ... 4mm², Connectable conductor cross-section, finely stranded with ferrule 0.5 ... 2.5mm², Connectable conductor cross-section solid 0.5 ... 4mm², connectable conductor cross-section stranded 1.5 ... 4mm², rated current In 24A, rated voltage 400V, electrical connection design 1 screw connection, electrical connection design 2 screw connection, connection position on the side, number of levels 2, number of clamping points per level 2, mounting type DIN rail TH35, material of the insulating body thermoplastic, operating temperature -50 ... 120°C, flammability class of the insulating material according to UL 94 V0, width/grid dimension 6.1mm, height with the lowest installation type 48mm, length 84.5mm, end plate required, color beige, terminal for space-saving connection or the connection of wires, cores and lines with permanently secure contact. Hardened steel for the mechanical forces and high-quality copper with a tin coating ensure the best conductivity.

YOUR ADVANTAGES



WORLDWIDE TRADE
Corporate video eibmarkt[®]



99% CUSTOMER SATISFACTION
> 500,000 customers worldwide



DHL TRACK & TRACE
Shipment tracking



COMPLAINTS HANDLING
Obliging and 100% safely



25 YEARS OF EXPERIENCE
In worldwide mail order



ORDER LIVE CHAT
With order history



SHORT DELIVERY TIME
Warehousing



REFUND
Within 14 days



DATA PROTECTION
Guarantee

© 1997-2024 eibmarkt.com GmbH - Kemmlerstrasse 1 - 08527 Plauen - Germany

eibabo[®] and **eibmarkt[®]** are registered trademarks of EIBMARKT[®] GmbH holding company (www.eibmarkt.de). eibabo[®] is a company of eibmarkt.com GmbH. eibmarkt.com GmbH is a 100% subsidiary of EIBMARKT[®] GmbH holding.

* Note on delivery time: Day = Monday to Friday, no public holiday in Bavaria or Saxony. Goods are also delivered on Saturdays (DHL).

** Payment methods may vary from country to country. All prices plus shipping and excluding customs duties or other additional costs (import sales tax) for deliveries outside the EU.

*** Savings compared to RRP = the manufacturer's recommended retail price. RRP is the price recommended to retailers by the manufacturer, importer or wholesaler as a resale price to the customer. The RRP is also referred to as the list price and is defined as the highest possible price that a buyer would pay for a specific product before any discounts (Source of gross list prices: Germany).

eibabo[®] the Smart Home technology shop
eibabo[®] electronics cheap online order
eibabo[®] electric appliances buy online

